

KIA MAUMAHARA A MOMENT IN TIME

TIME TRAVEL IN TO AOTEAROA



Kia Maumahara a Moment in time, a theatrically powerful moving experience, of song, dance, stunts performed by Te Whānau Āio.

Based on true events and direct family stories, this piece travels throughout moments in Māori history, from 15th century to 1950s to today; bringing light to many parts of New Zealand's history that continue to be unending in repetitive cycles through to today.

We travel through to spaces where lost souls may still be lingering and delve into what renewal and healing may mean by bringing home those either lost at sea spiritually or their tāonga.

Te Whānau Āio invite audience participants to dress in their chosen ancestral attire. From 15th-1950s as all are apart of this story.

Disclaimer: M15 mature audiences. True historical events expressed. War themes. Violence. Performers will be present from the beginning as you enter.



What the directors have to say:

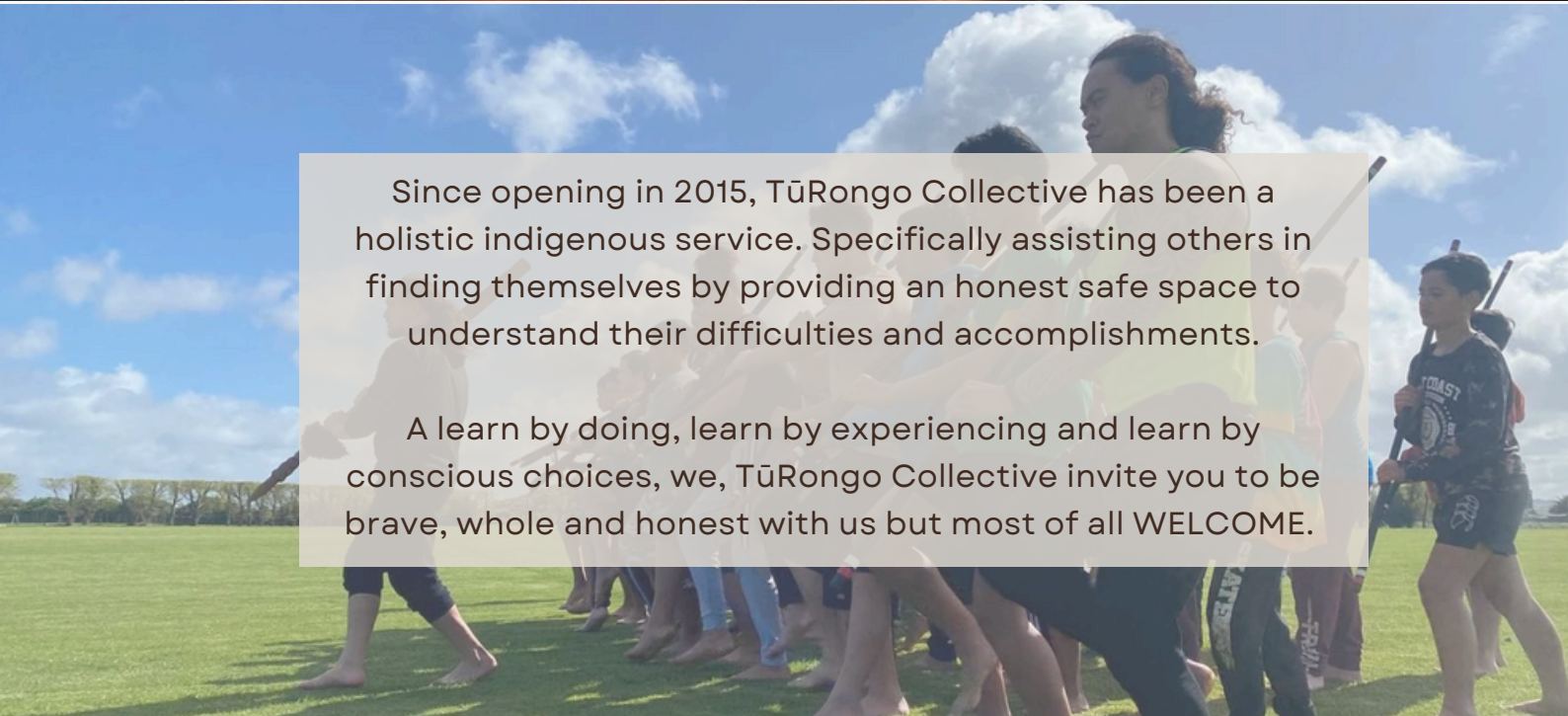
Tūrongo Collective are led by the guidance of Kārena Haraki Akuhata Grant-Koria and Milly Kimberly Grant-Koria.

The company work within Youth Justice, Spiritual healing therapy, Indigenous facilitation and education, Cultural Activation aswell as development and coaching for mental health.

Karena holding the masculine teachings from his upbringing as a Martial Artist, Mau Rākau practitioner, Stunt man and indigenous health consultant, while Milly holds the feminine medicine teachings from her practice of spiritual mediumship, holistic therapy which has facilitated healing and wellness for many thousands of people across the globe and many corporations. Together the couple lead the Auckland Museum guardianship group Te Whānau Āio.



TŪRONGO COLLECTIVE ABOUT US



Since opening in 2015, Tūrongo Collective has been a holistic indigenous service. Specifically assisting others in finding themselves by providing an honest safe space to understand their difficulties and accomplishments.

A learn by doing, learn by experiencing and learn by conscious choices, we, Tūrongo Collective invite you to be brave, whole and honest with us but most of all WELCOME.



TE WHĀNAU ĀIO



KO WAI MĀTOU

Te Whānau Āio are the cultural group in residence that hold sovereignty at the Auckland Museum for the Māori Cultural Experience known as Living TĀONGA.

Their collective purpose is to hold a space of guardianship that allows the world (tourists) to see a perspective that invites deeper questions around how the world wishes to perceive culture; Where the romanticism of marketed Māori culture is met with "you can only know what you live".

The group stand as an opportunity for individuals to experience living and learning how to practice accepting difference. To lean into learning more, rather than holding onto controlling what is desirable for a culture to be.

Te Whānau Āio share multiple stories and cultural ceremonies for visitors particular to the time of year and will shortly begin to hold regular nightly theatrical activations as part of caring for our Tāonga; in all forms. People, Wai, Whenua rather than working from separation.

MEET THE CAST



Karena Haraki Akuhata Korua

Iwi: Te Aitanga a Mahaki, Rongowhakaata, Ngāti Ruahine, Tuhoe, Te whānau Apanui, Te Mōana nui a Kiwa, Ikarangi mai tawhiti

Character: Koruru

Characters intention: Koruru's intention is to do his absolute best to protect his family, his people, his land and his future.

Personal drive: To remind myself and the connection I have to different leaders in history who played a part in making changes, and building relationships for a strong future. My drive is to be the best version of myself, so that the people around me can remember, be challenged, grow and love every parts of ourselves including the past, present and future.

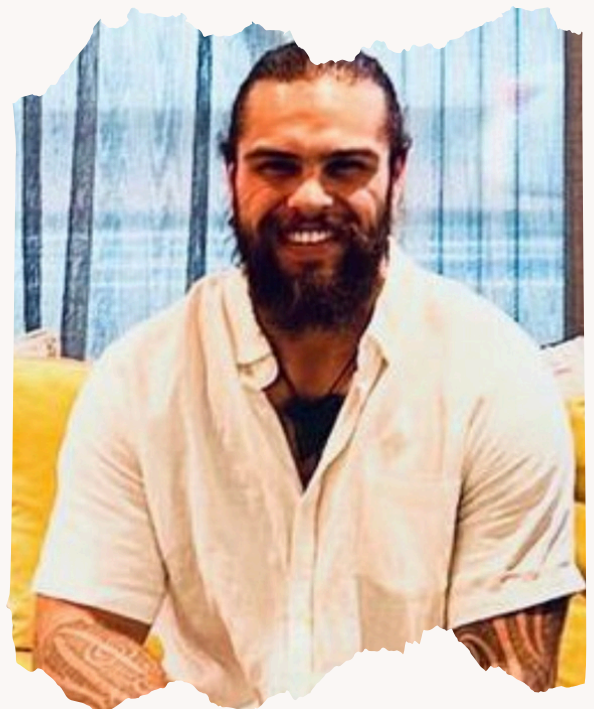
Rahiri Witehira

Iwi: Ngāpuhi, Ngati Haua

Character: Karanga

Characters intention: To reveal how important it is to be home, on our own land, surrounded by our own people!

Personal drive: Home will always be home, no matter where we are or end up. Whatever your journey may be it's never too late to start. Seek and you will find. What seems to be dead to others will always be living to us!





Puriri Koría

Iwi: Te Aitanga-a-Māhaki, Ngāruahine

Character: Poutuarongo

Characters intention: To uphold the mana of his bloodline for those who stood before him

Personal drive: To tap in to my sorcery and awaken light and dark energy. Shapeshifting into different beings. Unpredictability.

Ngarimu Wyatt

Iwi: Ngati Whātua

Character: Poutuarongo

Characters intention: Personifying the Mana of our Tūpuna

Personal drive: To change the negative narrative of how our people are portrayed, by showcasing the power as well as the vulnerability our Tūpuna possessed. Bringing truth to their stories.



Milly Kimberly Grant-Koria



Iwi: Tainui, Nga Puhi, Waiohua, Ngati Mahuta, Ngati Te Ata, Ngati Maniapoto, Ngati Raukawa, Ngati Paoa, Waitaha

Character: Kowhaiwhai

Characters intention: To prevent damage to the future by making sure that unholy choices will not damage the future of all.

Personal drive: Sometimes practicing what has been taught to you that implies "it is the right path" "pono ki te kaupapa" can sometimes be the most damaging form for the future without us knowing. We may believe it is right but in many cases can inflict so much pain. My work is to be in service of what the moment requires.

Huia Haere Manawa Nui King

Iwi: He kawai Heke nā Rāhiri, Ngāti Wai, Ngāti Whātua, Ngāti Kahungunu ki te Wairoa.

Character: Raparapa

Characters intention: Ka hāpai, whakarauora I te aroha o te kuia ki āna mokopuna, he rāranga I te mauri a āna uri ki tōna wairua tūtūru, ki tāna mana atua hoki.

Ahakoā ngā wero, ngā tāmitanga ā onamata, ā inamata hoki, mā ngā raparapa o te whare e tāwharautia ngā uri kia mau, kia ita I tēnei ao.

Personal drive: I au tipu ake ki kōhanga reo, kura kaupapa Māori, rūmaki reo, whare wānanga hoki, kua rongō ahau ki te whakamā, whakamana, whakaohoho a te wairua Māori, ka rongō I te whawhai a tupuna, kaiako, a whānau hoki. Nā konā, ka mārāma au ki te mamae roa, ki te pūrangiaho o te aroha I rō ao Māori.

Mā ēnei oranga āku, a tātou, ka mihia a mātāpuputu, ka tuku ngātahi a mamae, kia ao anō ko naiānei.





Maioha Andrews

Iwi: Ngāpuhi, Te Rarawa, Ngāti Whātua.

Character: Poutokomanawa

Characters intention: To lead by a gentle heart.

Personal drive: Personal growth, generational healing.

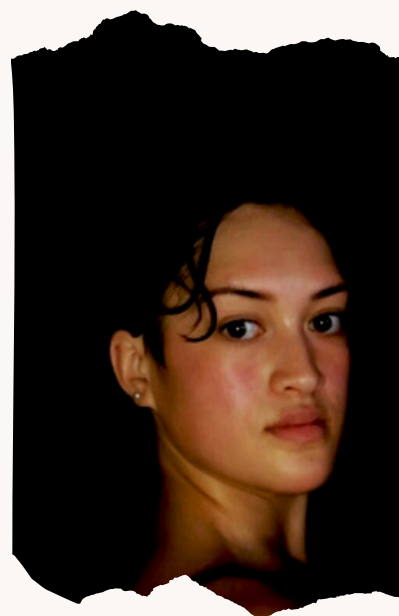
Petiata Korā

Iwi: Te Aitanga-a-Māhaki, Ngāruahine, Rongowhakaata

Character: Poutahuhu

Characters intention: To portray the fear, the grief, and the kidnappings that happened when indigenous children were taken from their mothers.

Personal drive: Bringing forth the stories of indigenous groups and acknowledging those who were kidnapped, enslaved, psychologically, and physically abused by power, false religion, prejudice, desire and greed.



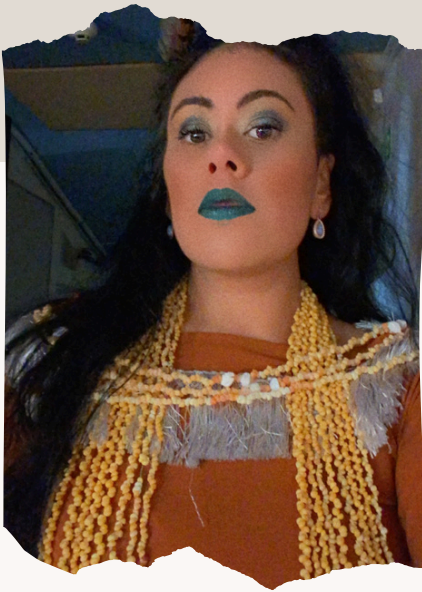
Keira Blair Shaw

Iwi: Ngāti Whātua, Ngāti toa Rangatira

Character: Whaikorero

Characters intention: Lead by a driven heart, to be content with making sacrifices in order to better our people.

Personal drive: We are the same but have taken different journeys that impact on how we go about bettering our people, even if others don't agree. But also to show the mamae that is felt when our taonga are stripped away and how it impacts generations of people..



Charm Tamatea

Iwi: Te Aitanga-a-Mahaki, Rongowhakaata, Ngati Porou

Character: Heke

Characters intention: To regather the shards of despair

Personal drive: To heal different ancestral lines that hold intergenerational trauma by engaging in the work myself.

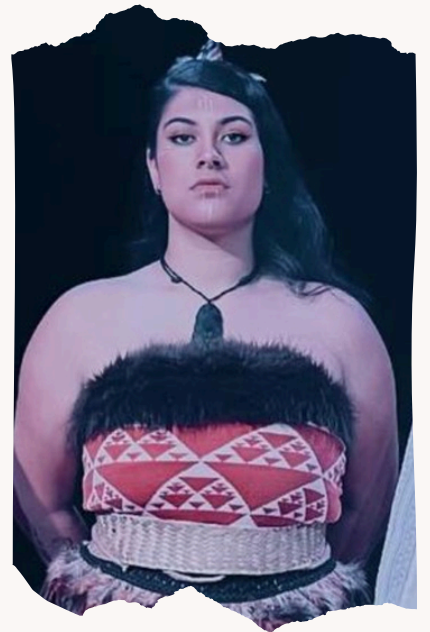
Mahani Ripikoi

Iwi: Ngati Whatua ki Kaipara

Character: Heke

Characters intention: Acknowledging moments of time that have changed over the years.

Personal drive: To give the audience a wider and deeper understanding of matauranga Māori and tikanga maori but also going through this whole journey and taking in knowledge and experiences and finding myself and my path.



Taivero Hemi Mane-Wheoki Strickland

Iwi: Ngai Te Rangi, Ngāti Kuri, Ngāpuhi, Ngāti Tangahoe

Character: Amo

Characters intention: Beginning - Bloodlust, indomitable, hunter. Ending - War is pointless, longing for peace, just wanting to go home.

Personal drive: Kia whakamana i ōku mātua tīpuna. Rātou i whawhai, i nanaiore, i tū parekura kia ora ēnei o ngā mātauranga. Rātou i whakamāori ai te whenua, i whakamāori ai te arero, i whakamāori ai te ngākau kia puanani tātou mai roto i te kau aroha o Te Reo Māori me ōna tikanga. Hei whakakaureratia i au anō ki roto i tēnei ao kikokiko, ā, hei whakakōpana i āku tini wheinga a toto, i āku tini ia taiheke a wairua. Koinei te ara! Kōkirihiā!



Ke'arn Peters



Iwi: Ngaa Rauru Kiitahi

Character: Maihi

Characters intention: I ngā wā e tū ana hei hōia Pākehā, Me whakaatui au i ngā whakaaro o ngā hōia Pākehā i te wā i kite rātou i ō tātou tūpuna. I ērā atu wā, ka kawea au i te mamae me te pouritanga o ōku tūpuna engari, ka whakapuaki i ō rātou māiatanga, mana, kaha hoki. Ko te tumanako, ka tohatoha atu au i te wairua me te mauri o ēnei kōrero ki te ao. Ka whakamana i ērā kōrero, tē taea e tātou te kite i ngā pukapuka hītori. Mēnā, ka taea e ōku tūpuna te kite i āku mahi, ka menemene mai tangi mai rāneu rātou, whakatau mauri ai, kia ita i tēnei ao.

Personal drive: I au tipu ake ki kōhanga reo, kura kaupapa Māori, rūmaki reo, whare wānanga hoki, kua rongohau ki te whakamā, whakamana, whakaohoho a te wairua Māori, ka rongohau i te whawhai a tūpuna, kaiako, a whānau hoki.

Nā konā, ka mārara au ki te mamae roa, ki te pūrangiaho o te aroha i rō ao Māori.

Mā ēnei oranga āku, a tātou, ka mihia a mātapuputu, ka tuku ngātahi a mamae, kia ao anō ko naiānei.

Zahara - Grant Korias

Iwi: Ngapuhi, Ngati Wehi, Tainui, Ngati Porou

Role: Light and Sound Operator, Usher

Personal Drive: Before I began working at the Museum, I never wanted to learn about my culture's history. Now that I'm involved within a space regarding Te Ao Māori, I can definitely say that my interests have changed. I also enjoy my family being within this workspace because it has helped and shifted my perspective. Without my parents, my perspective on Māori history may not have changed. Finally, what inspires me the most is the ability to help educate and introduce change surrounding Māori culture within the Auckland War Memorial Museum.



To our loved ones

Who guide us to continue sharing
from our vulnerability and honesty.
As we walk, you walk with every
step of ours forever living.

Wiremu Korua
Granddad Ofe
Papa Willie Tamatea
Granddad Russell
Nana Grant
Nanny Babe
Papa Bob
Aunty Moana
Nanny Olive Tamatea
Grandad Willie Wereta Tamatea Snr
Kui Miniao Boylan
Kui Rutua Ngapae Whakamoutonga
Kui Te Kahoki Omahuru
Aunty Maewa
Nana Neva Morunga
Nana Rewa Waihape
Papa Rutene Waihape

Papa Fred Morunga
Grandad Mervyn Tangaroa
Papa Mita Kākā
Aunty Sharlene Morunga
Poppa Greg Blair
Nana Moffat Blair
Kuima Rewa Waaka
Nana Maryanne
Aunty Tapaeru Steedman
Tuakana Jackson
Bradley Cribb
Grandad Gordon Cribb
Koro Rahiri Witehira
Nana Alice
Violet Evelyn McCallion
Nan Esther Te Kiri Hunt
Nan Ngahuia Pakuoterangi Hunt
Papa James Jelico Hunt
Nana Hilda-Rose Waitai



SPECIAL ACKNOWLEDGEMENTS

To our tamariki, our families, our parents, elders, teachers, mentors, Korā Whānau, Ngāti Whātua, Teina Lee Moetara.
It is your walk in your lives, in your iwi that has nourished our own.

For further feedback and enquiries, please email admin@turongocollective.com